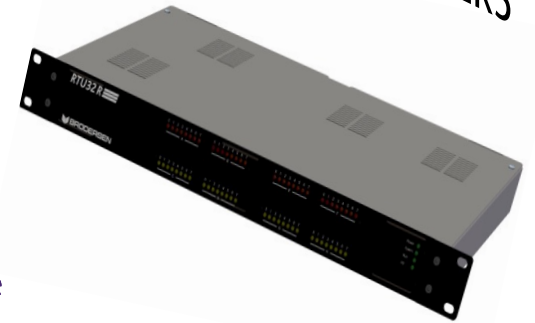


RTU/ PLC/ PAC/ DATA CONCENTRATOR/
 DATA LOGGER/ UTILITY CONTROLLERS

- SCADA/Telemetry
- Substation Automation
- Traffic Monitoring
- Factory Automation
- Weather Monitoring
- Asset Monitoring
- ...

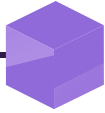


- Water/Waste Water,
- HV/MV/LV Substations,
- Airports, Rail ways, Highways,
- Pipelines,
- Industries,
- Tunnels,
- etc.

- Versatile, Powerful, Flexible
- Heavy Duty
- Made for normal OR harsh environments
- Spectrum of protocols
- Variety of serial ports
- Embedded and remote I/Os
- ...



Rhyton Global, LLC
 1.800.388.9919 – 1.949.705.4405
 CONTACT@RHYTONGLOBAL.COM
 18100 Von Karman Ave, Suite 850,
 Irvine, CA 92612



A COMPLETE RANGE OF MEDIUM, SMALL AND COMPACT RTU/ PLC/ PAC/ DATA CONCENTRATOR/ DATA LOGGER/ UTILITY CONTROLLERS

BY BRODERSEN

	RTU32	RTU32E (New)	RTU32R (19"Rack)	RTU32S	RTU870	RTU8	RTUCOM
CPU	32 bit 500MHz	32 bit 500MHz	32 bit 500MHz	32 bit 200MHz	8bit	8bit	8bit
Memory (RAM) range	128 MB	128 MB	128 MB	128 MB	23KB	23KB	23KB
Memory (Flash) range	128 MB	128 MB	128 MB	64 MB	–	–	–
Operating System	Win CE	Win CE	Win CE	Win CE	–	–	–
On Board I/O	Varies	32DI,16RO,12AI, 4AO	Varies	Varies	14DI,4DO,4AI,2C	Varies	–
Embedded Web Server/HMI	✓	✓	✓	✓	–	–	–
Remote Configuration	✓	✓	✓	✓	–	–	–
Programming	IEC61131-3	IEC61131-3	IEC61131-3	IEC61131-3	IEC1131-3	IEC1131-3	IEC1131-3
Redundancy	✓	✓	✓	–	–	–	–
Time Stamping	1ms	1ms	1ms	1ms	100ms	100ms	100ms
Time Synchronization	SNTP	SNTP	SNTP	SNTP	With PC	With PC	With PC
I/O expansion Boards	Up to 32	Up to 32	Up to 32	Up to 32	–	–	–
LAN Ports	2	2	2	1	–	–	–
VGA /LCD Ports	1	1	1	1	–	–	–
USB Ports	2	2	2	2	–	–	–
PS2 Ports (Kbd, Mse)	1	1	1	1	–	–	–
Com Ports: RS232	1	1	1	2	1	1	–
Com Ports: RS485	1	1	1	1	1	1	–
GSM/GPRS Modem	–	–	Optional	–	–	–	✓
Protocols: Modbus RTU	✓	✓	✓	✓	✓	✓	✓
Protocols: Modbus TCP	✓	✓	✓	✓	–	–	–
Protocols: Profibus	✓	✓	✓	✓	–	–	–
Protocols: Profinet	✓	–	✓	–	–	–	–
Protocols: DNP3	✓	✓	✓	✓	–	–	–
Protocols: WITS-DNP3	✓	✓	✓	✓	–	–	–
Protocols: SNMP	✓	✓	✓	✓	–	–	–
Protocols: IEC60-870-5-101	✓	✓	✓	✓	✓	–	–
Protocols: IEC60-870-5-103	✓	✓	✓	✓	–	–	–
Protocols: IEC60-870-5-104	✓	✓	✓	✓	–	–	–
Protocols: IEC61-850 (GOOSE)	✓	✓	✓	✓	–	–	–
Power Supply	Varies	Varies	Varies	Varies	–	–	–
Built –in UPS	✓	–	✓	✓	✓	✓	–
Ambient Temperature	-22 to 140°F	-4 to 140 °F	-22 to 140 °F	-4 to 140 °F	14to130 °F		
EMC	EN 55022A	EN 55022A	EN 55022A	EN 55022A	EN 50081/EN50082-2		